



*South African Grain Information Service*

## INTRODUCING SAGIS

### Background

The South African Grain Information Service (SAGIS), a non-profit company, was established on 11 November 1997, after the deregulation of the marketing and control boards in South Africa, to supply the grain and oilseeds industry with essential market information.

The four industries, that are served by SAGIS, are:

- Maize (white and yellow separate)
- Oilseeds (sunflower, soyabean, canola & groundnuts)
- Wintergrain (wheat, barley & oats)
- Sorghum

Before deregulation the control boards of the four industries managed the information service. The Marketing of Agricultural Products Act, 1996 brought an end to single channel marketing and the control boards. Role-players, however, realised the importance of reliable information for the functioning of a free market and have co-operated to establish SAGIS.

The main goal of SAGIS is the gathering, processing, analysing and timeous distribution of reliable agronomic information to all role-players. SAGIS is also entrusted with other functions, for example the monitoring of import tariffs, audit certificates for minimum market access, etc.

### How is SAGIS empowered to obtain information?

Market participants (co-workers), e.g. storers, processors, importers and exporters of above grains and oilseeds, are statutory compelled under the Marketing Act of Agricultural Products, Act 47 of 1996, to register with SAGIS and to submit information. A co-worker that does not adhere to the requirements of the statutory measure is guilty of an offence and can be prosecuted. Fortunately co-workers realise the importance of reliable information and co-operates mostly by submitting returns timeously and regularly.

### Number of market participants supplying information

The total number of co-workers changes continuously due to the entry of new market participants or the exit of existing firms that close their doors. The number of co-workers and number of returns that are submitted are published in the annual report of SAGIS. (A copy of the annual report is available on the web.)

Notwithstanding co-workers who are statutory compelled to supply information, various other partners provide information on a voluntary basis. This is used as a measure of control to evaluate the information for completeness and reliability before it is released.

### Structures in which SAGIS is involved

#### 1. Forums

Market participants of each of the four industries established forums where role-players meet for matters of mutual interest, inter alia market information. With regard to information the forums make recommendations to:

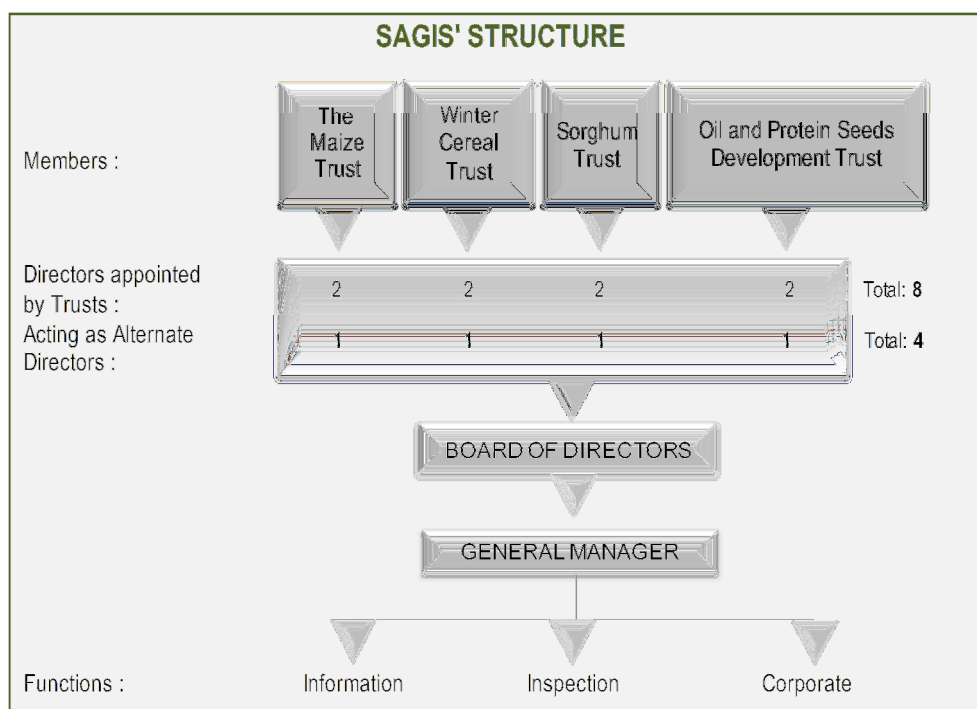
- The NAMC regarding the needs of the industry and, if necessary, that SAGIS is to provide the function.
- The Trust of each industry concerning the funding of the function.

## 2. Trusts

The Trusts of the four industries are registered as members of SAGIS and each Trust annually appoints two directors as well as one alternate director. SAGIS is also funded by the relevant Trusts.

## 3. Directors

The Board of Directors gives the direction and the General Manager reports to the Board.



## 4. Government institutions

SAGIS liaise and work close with different government bodies like ITAC, DAFF, PDA's, DTI etc. on matters such as tariffs, crop estimates and the supplying of market information.

## 5. SAGIS' structures

The main functions of SAGIS are executed by the following departments:

- **Information:** Gather, process, analyse and disseminate information.
- **Inspection:** Stocktaking and auditing of the information received to verify for the correctness, completeness, consistency and reliability.
- **Corporate:** Administration, finances and personnel matters.

## 6. Sundry external structures

There are several external structures, such as the associations of role-players (e.g. AGBIZ Grain, NCM, SACB, Grain SA, etc.), harbour authorities, Spoomet, consultants, research institutions, etc, with which SAGIS regularly liaises.

## Information released by SAGIS

SAGIS releases the following information:

- **Monthly Data (MD)**  
Variety data sets with stock, producer deliveries, imports, exports and consumption. This is released towards the end of each month.

- **Weekly Bulletin (WB)**  
This is a collection of local and international information such as prices, stocks, import parity prices, economic indicators, the food prices of Statistics SA, weather conditions, etc. This is usually released on the SAGIS website on Thursdays.
- **Weekly imports and exports (maize and wheat)**  
This is usually released on the SAGIS website on the 2<sup>nd</sup> working day of every week.
- **Weekly producer deliveries (maize and wheat)**  
This is usually released on the SAGIS website on the 3<sup>rd</sup> working day of every week, per grade for maize and in total for wheat.
- **Maize and wheaten Product Information**  
Since August 2015 it is published on the first Friday of each month. Refer to the website for the publication dates.
- **Website ([www.sagis.org.za](http://www.sagis.org.za))**  
The abovementioned information plus a historic database and much more are available on the website.

The MD and WB are distributed in accordance with a distribution list but the information is also published on the website. Persons included on the distribution list (the list is continuously updated on request) receive the bulletins by e-mail, fax or ordinary post.

Thanks to the funding of SAGIS by the four industry trusts, information is currently released free of charge.

### Reliability and integrity of information

Various actions are continuously executed to verify the reliability of the information. These actions include, inter alia:

- **Internal control measures**  
Controls and cross references on the returns and in the computer system as well as internal audits:  
Verifying information with data obtained from sources that are not statutory compelled (e.g. harbour authorities, WFP, PPECB, Spoornet, DTI, etc.).
- **External control measures**  
Auditing of the source documents of co-workers and stocktaking by SAGIS' inspectors, as well as continuous negotiations with possible external sources to participate.
- **Sundries**  
SAGIS' stock figures is the physical stock stored in commercial structures at a given point in time. This stock is not necessarily available for marketing as it might include whole grain/oilseeds that have already been contracted.

The Crop Estimates Committee (CEC) of the DAFF is responsible for the national crop estimates. This can, for various reasons, differ from SAGIS' producer deliveries. SAGIS' producer deliveries represent deliveries by producers in commercial structures on premises of co-workers registered with SAGIS and, therefore, do not include retentions on farms.

### Users of SAGIS' information

The information are used by role players with regard to marketing- and production decisions. SAGIS also serves as a source for International organisations such as the IGC, USDA and WFP.

### Contact details

Office hours of SAGIS is Monday to Friday, from 07:00 until 16:00.

Postnet Suite 534, Private Bag X1, The Willows, 0041  
Grain Building, 2<sup>nd</sup> Floor  
477 Witherite Street, The Willows, 0040

Tel +27 (12) 941 2050  
Fax +27 (12) 349-9200  
E-Mail: [info@sagis.org.za](mailto:info@sagis.org.za)  
Web address: <http://www.sagis.org.za>



*SAGIS strives to continuously render a service of excellence*