



South African Grain Information Service Overview

29 May 2019

Nico Hawkins
General Manager

2017/18	2018/19	Estimate 2017/18	2018/19
2 428.7	2 428.7	Mt	
501.6	501.6		
0.0	0.0	Not available	
6 874.0 (b)	6 874.0 (b)		
565.0	565.0		
(b) 1 678.8 (b)	(b) 1 678.8 (b)		

TIMATE, YIELD, HA & SAGIS DELIVERIES

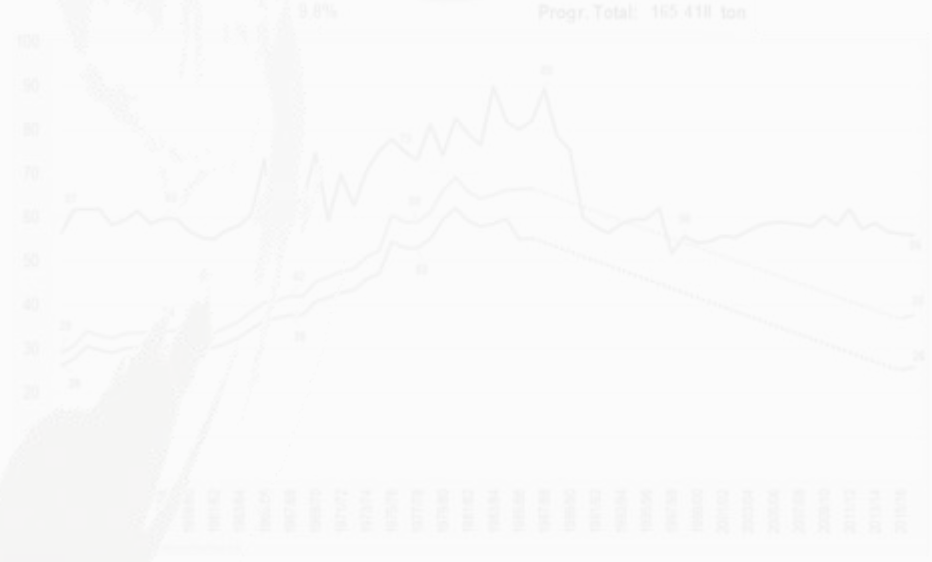




Year	Net AC	Inter	Sep
2017/18	2 428.7	Estimate	2017/18
2018/19	2 428.7	Estimate	2018/19
2019/20	2 428.7	Estimate	2019/20
2020/21	2 428.7	Estimate	2020/21
2021/22	2 428.7	Estimate	2021/22
2022/23	2 428.7	Estimate	2022/23
2023/24	2 428.7	Estimate	2023/24
2024/25	2 428.7	Estimate	2024/25
2025/26	2 428.7	Estimate	2025/26
2026/27	2 428.7	Estimate	2026/27
2027/28	2 428.7	Estimate	2027/28
2028/29	2 428.7	Estimate	2028/29
2029/30	2 428.7	Estimate	2029/30
2030/31	2 428.7	Estimate	2030/31
2031/32	2 428.7	Estimate	2031/32
2032/33	2 428.7	Estimate	2032/33
2033/34	2 428.7	Estimate	2033/34
2034/35	2 428.7	Estimate	2034/35
2035/36	2 428.7	Estimate	2035/36
2036/37	2 428.7	Estimate	2036/37
2037/38	2 428.7	Estimate	2037/38
2038/39	2 428.7	Estimate	2038/39
2039/40	2 428.7	Estimate	2039/40
2040/41	2 428.7	Estimate	2040/41
2041/42	2 428.7	Estimate	2041/42
2042/43	2 428.7	Estimate	2042/43
2043/44	2 428.7	Estimate	2043/44
2044/45	2 428.7	Estimate	2044/45
2045/46	2 428.7	Estimate	2045/46
2046/47	2 428.7	Estimate	2046/47
2047/48	2 428.7	Estimate	2047/48
2048/49	2 428.7	Estimate	2048/49
2049/50	2 428.7	Estimate	2049/50
2050/51	2 428.7	Estimate	2050/51
2051/52	2 428.7	Estimate	2051/52
2052/53	2 428.7	Estimate	2052/53
2053/54	2 428.7	Estimate	2053/54
2054/55	2 428.7	Estimate	2054/55
2055/56	2 428.7	Estimate	2055/56
2056/57	2 428.7	Estimate	2056/57
2057/58	2 428.7	Estimate	2057/58
2058/59	2 428.7	Estimate	2058/59
2059/60	2 428.7	Estimate	2059/60
2060/61	2 428.7	Estimate	2060/61
2061/62	2 428.7	Estimate	2061/62
2062/63	2 428.7	Estimate	2062/63
2063/64	2 428.7	Estimate	2063/64
2064/65	2 428.7	Estimate	2064/65
2065/66	2 428.7	Estimate	2065/66
2066/67	2 428.7	Estimate	2066/67
2067/68	2 428.7	Estimate	2067/68
2068/69	2 428.7	Estimate	2068/69
2069/70	2 428.7	Estimate	2069/70
2070/71	2 428.7	Estimate	2070/71
2071/72	2 428.7	Estimate	2071/72
2072/73	2 428.7	Estimate	2072/73
2073/74	2 428.7	Estimate	2073/74
2074/75	2 428.7	Estimate	2074/75
2075/76	2 428.7	Estimate	2075/76
2076/77	2 428.7	Estimate	2076/77
2077/78	2 428.7	Estimate	2077/78
2078/79	2 428.7	Estimate	2078/79
2079/80	2 428.7	Estimate	2079/80
2080/81	2 428.7	Estimate	2080/81
2081/82	2 428.7	Estimate	2081/82
2082/83	2 428.7	Estimate	2082/83
2083/84	2 428.7	Estimate	2083/84
2084/85	2 428.7	Estimate	2084/85
2085/86	2 428.7	Estimate	2085/86
2086/87	2 428.7	Estimate	2086/87
2087/88	2 428.7	Estimate	2087/88
2088/89	2 428.7	Estimate	2088/89
2089/90	2 428.7	Estimate	2089/90
2090/91	2 428.7	Estimate	2090/91
2091/92	2 428.7	Estimate	2091/92
2092/93	2 428.7	Estimate	2092/93
2093/94	2 428.7	Estimate	2093/94
2094/95	2 428.7	Estimate	2094/95
2095/96	2 428.7	Estimate	2095/96
2096/97	2 428.7	Estimate	2096/97
2097/98	2 428.7	Estimate	2097/98
2098/99	2 428.7	Estimate	2098/99
2099/00	2 428.7	Estimate	2099/00
2100/01	2 428.7	Estimate	2100/01



SAGIS overview



Deregulation

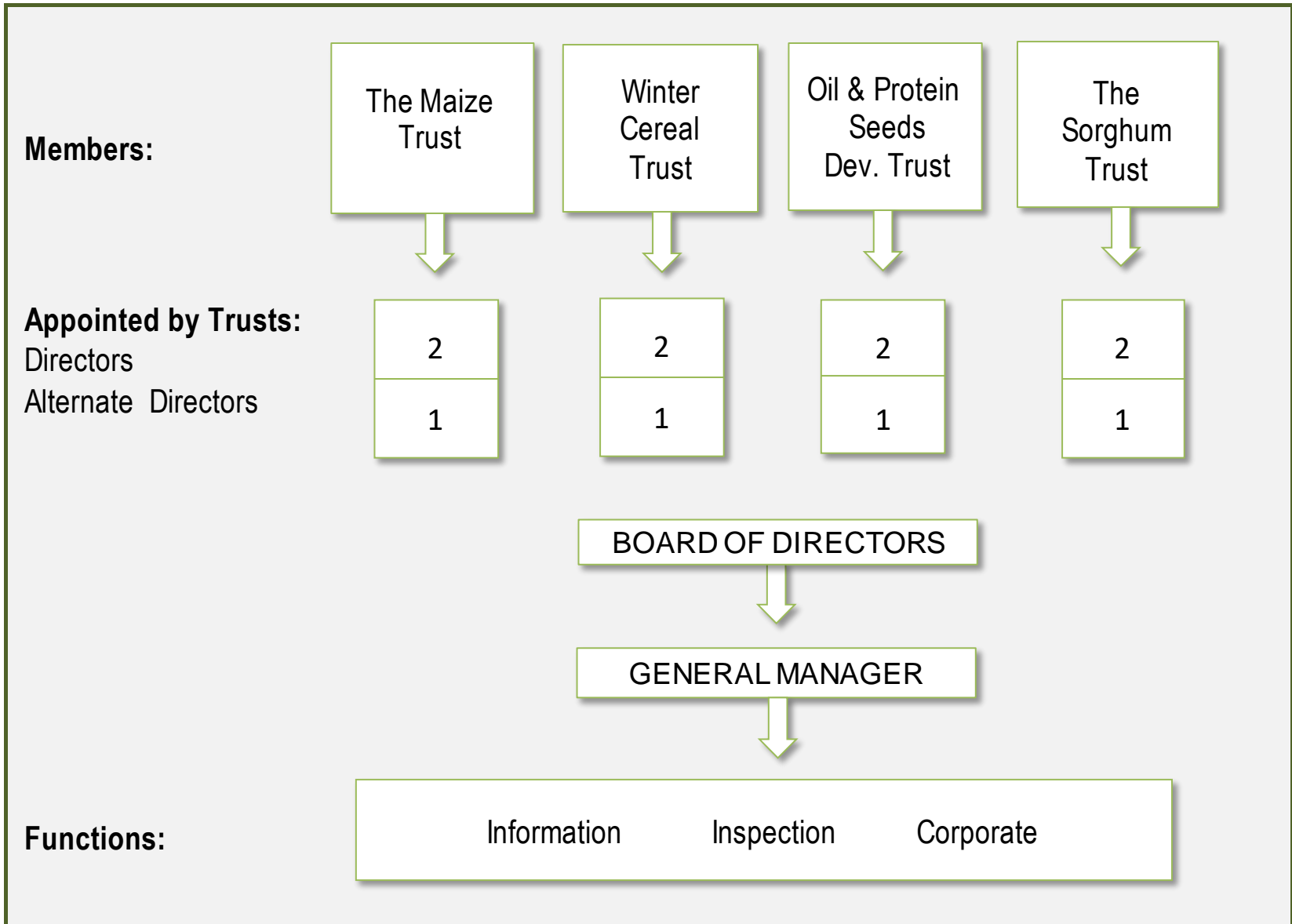
- Marketing of Agri. Products Act, 1996 – end to single channel marketing & control boards.
- Importance of reliable info for the functioning of a free market was realised.
- Non Profit Company - registered in November 1997

Industries

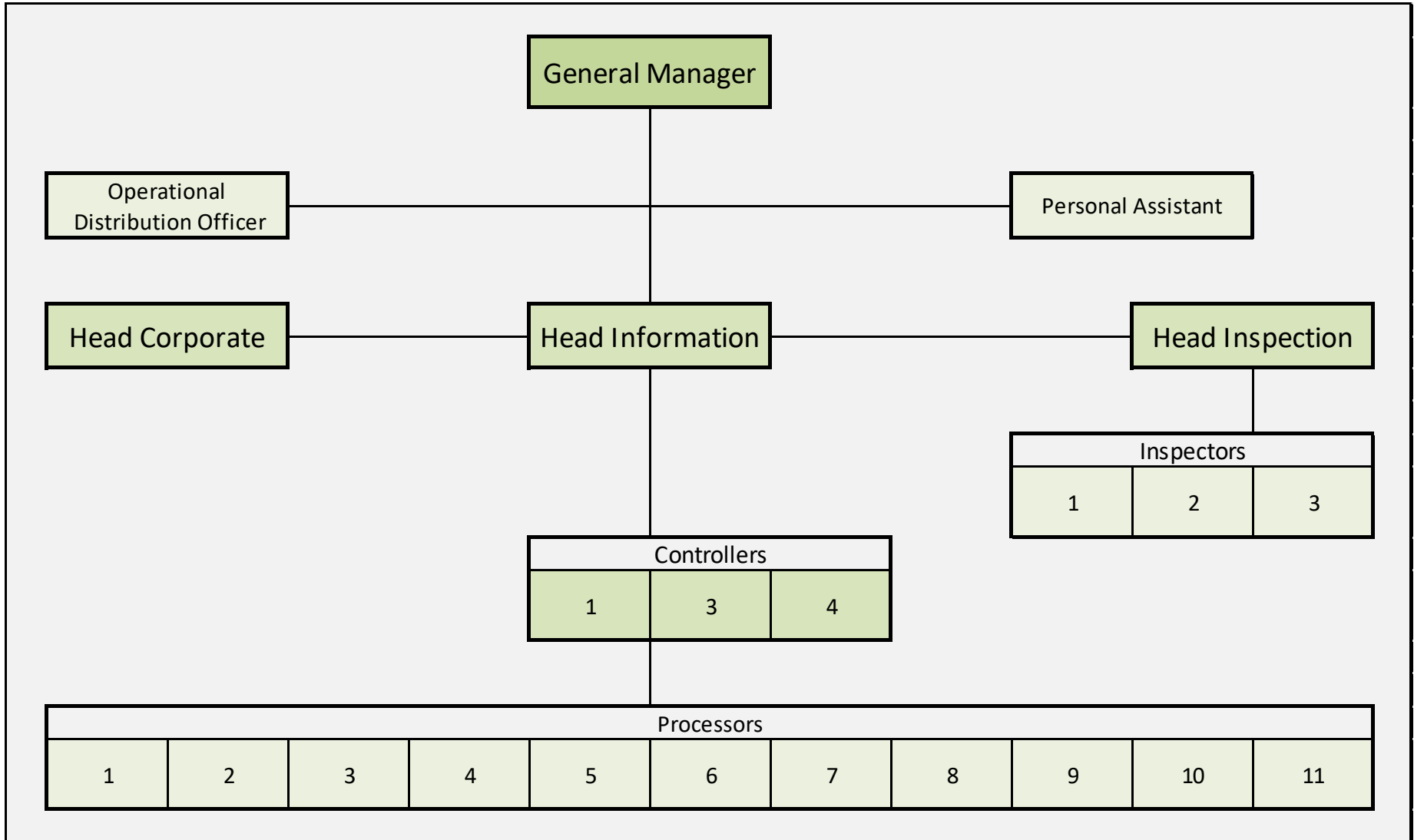
- Four industries created SAGIS (re-presented by their various Trusts):
 - The Maize Trust
 - Oil and Protein Seeds Development Trust
 - The Sorghum Trust
 - Winter Cereal Trust
- SAGIS is also funded by these trusts



SAGIS' Organizational structure



SAGIS' Organizational structure - Personnel



Total : 24 staff members

SAGIS' main objective (function)

Main Objective

The collation, processing, analysing and timeous distribution to all role-players, of reliable and useful market information related to grain and oilseeds.



Statutory Measures (SM)

- Government announced SM – compulsory for market participants (*co-workers*) e.g. storers, processors, importers & exporters to register & submit information.
- Non adherence is an offence & can lead to prosecution.
- SAGIS fulfil its statutory obligations & liaises with certain Government departments to obtain market information **BUT** it operates independently from Government as far as its main goals are concerned.
- No incentives to co-workers. They do get reliable and cost free information and confidentiality.

Statutory Measures (SM)

Monthly Information on whole grain & oilseeds: Registration, records & returns

- **1997/11/28** First SM was promulgated in November 1997 (SM were separate for each crop)
- **2008/06/04** SM for all grain & oilseeds were combined into one SM

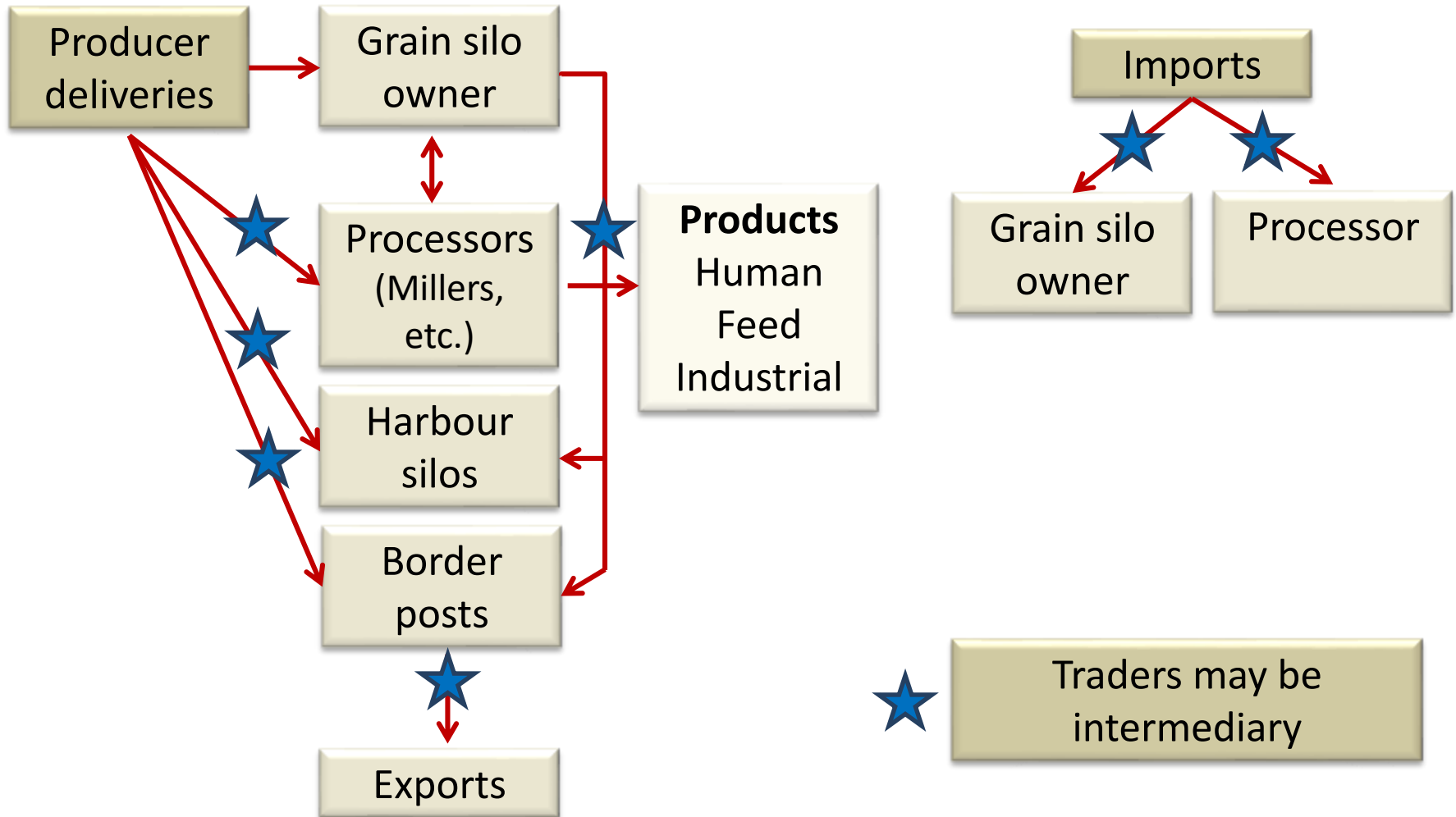
Weekly Information on maize & wheat imports: Registration, records & returns

- **2008/06/04** Weekly imports & exports: maize & wheat
- **2018/05/18** Amendment Maize: Records & Returns on intended imports & exports
- **2018 Concept** Records and returns in respect of grains and oilseeds imports and exports

Monthly Information on products: Registration, records & returns

- **2014/11/20** Maize & wheat products
- **2016/09/23** Oilseeds products

Principle: Grain flow



Consigner and recipient rapport – SAGIS verify and reconcile each transaction

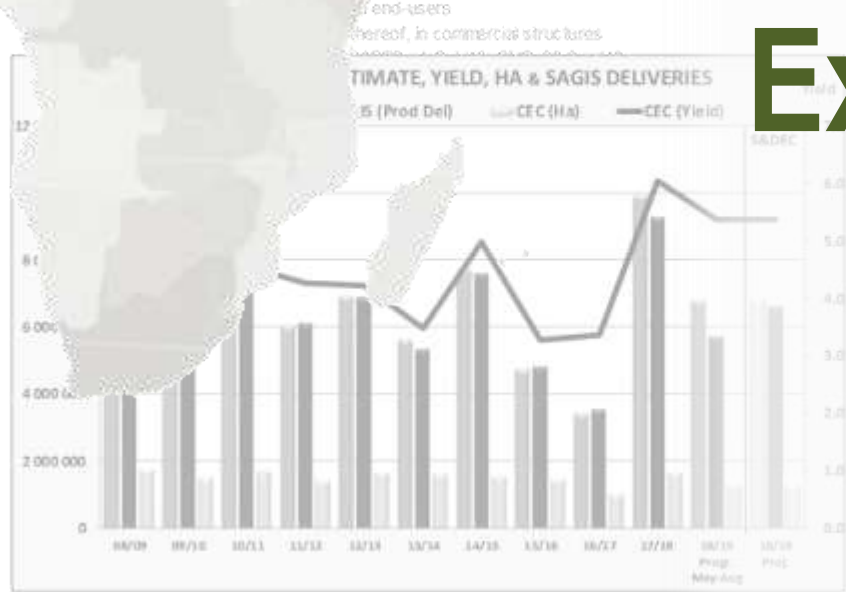
Principles of Data - confidentiality

- All information received is treated as **absolute confidential**.
- Personnel sign a **confidentiality clause**.
- Only General Manager may **release** information.
- Information is released at the **same time** to all.
- **Individual company info** is **never released** except by court order.



Year	Production (000 Mt)	Inter: (000 Mt)	Estimate 2017/18 (Mt)
2016/17	2 428.7	301.6	Not available
2017/18	2 687.4 (b)	565.0	Not available
2018/19	1 678.8 (b)	-	-

Who supply info & External sources



Compulsory Info Suppliers (Statutory compelled)

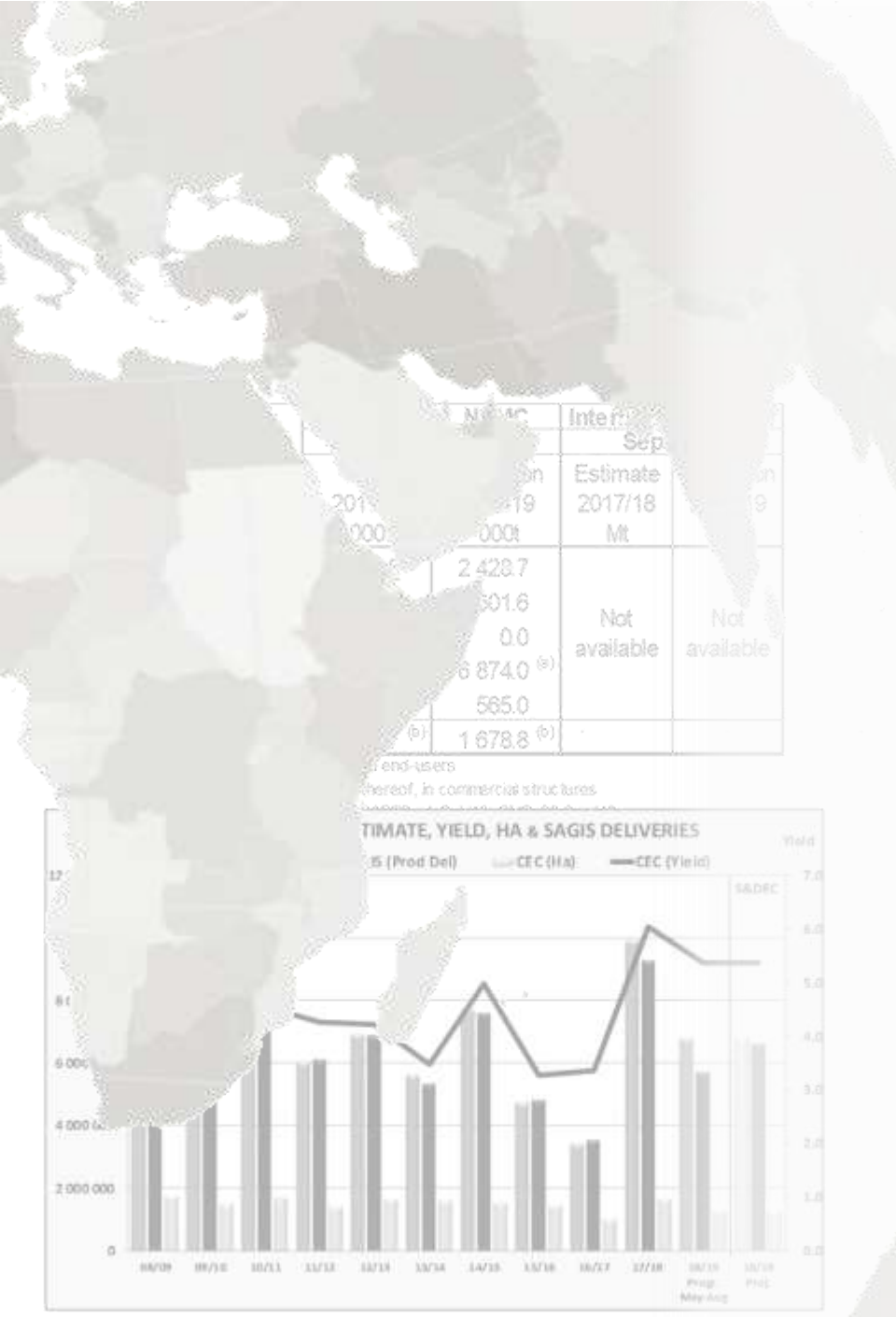
- Commercial grain silo owners
- Harbour silo owners
- Traders with premises
- Importers / Exporters
- Processors
- End consumers
- Producers acting as any of the above

Voluntary Info Suppliers

- Traders without premises
- Spoornet
- Portnet

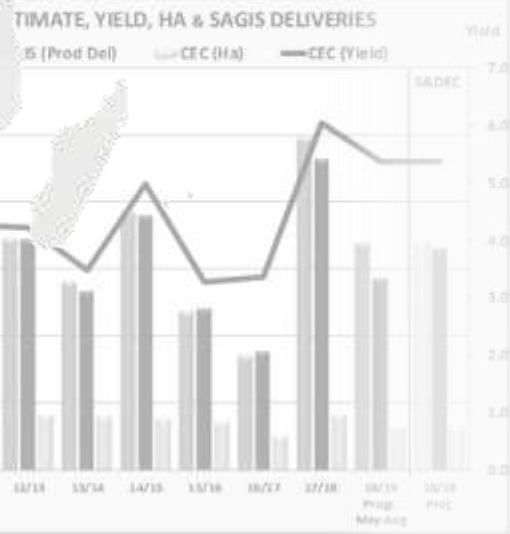
External information sources

- Customs & Excise
- International Grains Council
- Oil world
- Nat. Crop Estimates Committee
- FAO/Early warning unit
- Commercial banks
- Perishable Product Exports Control Board
- Cross Border Road Transport Agency

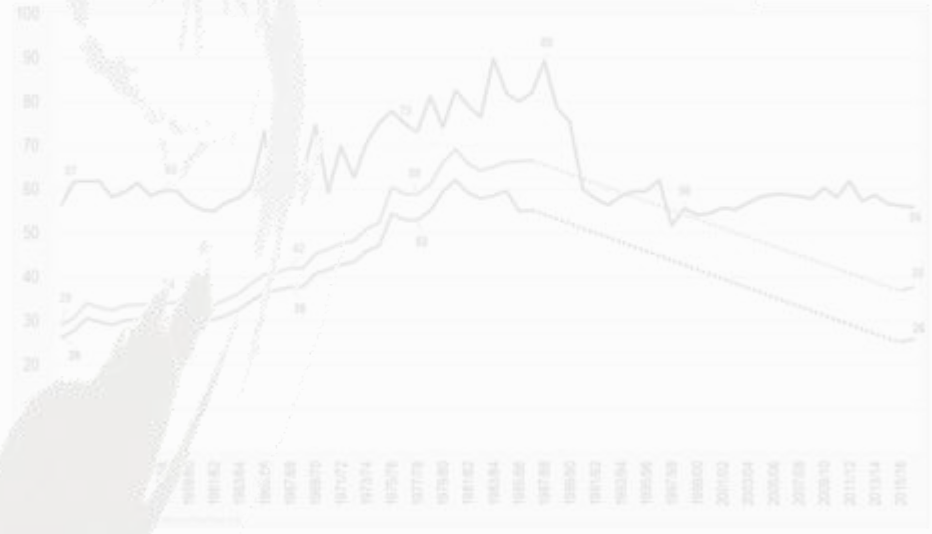


Year	Production (000 t)	Inter: Sep	Estimate 2017/18 (Mt)	2018/19
2017/18	2 428.7	Estimate	2 428.7	2 428.7
2016/17	2 501.6	Not available	Not available	Not available
2015/16	2 687.0 (b)	Not available	Not available	Not available
2014/15	2 565.0	Not available	Not available	Not available
2013/14	1 678.8 (b)	Not available	Not available	Not available

of end-users
thereof, in commercial structures



Inspection



Inspection

- The **Minister** may **appoint** a person as an **inspector** to exercise the powers and perform the duties.
- An inspector shall be furnished with a certificate, signed by or on behalf of the Minister and bearing a declaration that the bearer is an inspector in terms of this Act.

REPUBLIC OF SOUTH AFRICA
REPUBLIEK VAN SUID-AFRIKA

Inspection

An inspector may:

- at any reasonable time, enter premises where he or she has reason to believe that a statutory measure or any prohibition, control or direction referred to in this Act has been or is being contravened,
- investigate and obtain evidence,
- inspect any book, record or other document and make copies thereof or,
- deliver any book, record or other document that pertains to the investigation, and
- make excerpts from it

Purpose of inspection

Give management reasonable assurance that:

- risks associated with relevant business activities are fully identified
- existing controls are sufficient to provide the identified risks
- the main and strategic objectives will be effectively and economically reached.

Modus Operandi of Inspection Department

Inspectors visit co-workers to:

- Do stocktaking and audit information received for:
 - Correctness
 - Completeness
 - Consistency
 - Reliability

- Assist in training of new staff members at co-workers

- Build relationships and trust between SAGIS and co-workers



Year	Area	Inter.	Area
2017/18	2 428.7	Estimate	2 428.7
2018/19	2 501.6	Not available	2 501.6
2019/20	2 687.4 (b)	Not available	2 687.4 (b)
2020/21	2 565.0	Not available	2 565.0
2021/22	1 678.8 (b)	Not available	1 678.8 (b)

Data released / Dissemination Analysis



Monthly Information: (Raw Materials)

- Barley
- Canola
- Groundnuts
- Maize
- Oats
- Sorghum
- Soybeans
- Sunflower
- Wheat

- Stocks (Opening & Closing)
- Imports & Exports
- Prod. Deliveries in commercial structures
- Processed

SAGIS: Monthly Data – Products

Manufactured, Imported & Exported



Maize

MAIZE PRODUCTS MANUFACTURED PER MARKETING YEAR

Date Published: 2018/12/07

	Marketing year: May 2016 - Apr 2017			Marketing year: May 2017 - Apr 2018			Marketing year: May 2018 - Apr 2019		
	Manufactured			Manufactured			Manufactured		
	Tons Progressive: 12 Months			Tons Progressive: 12 Months			Tons Progressive: 6 Months (May - Oct)		
	White Maize	Yellow Maize	Total Maize	White Maize	Yellow Maize	Total Maize	White Maize	Yellow Maize	Total Maize
Maize Chop	1 305 565	184 130	1 489 695	1 430 700	171 566	1 602 266	770 865	87 551	858 416
Maize Rice	8 894	*	8 894	8 727	*	8 727	4 328	*	4 328
Maize Grits	47 392	*	47 392	60 423	*	60 423	35 097	*	35 097
Samp	107 965	*	107 965	112 676	*	112 676	61 234	*	61 234
* Total Yellow Maize Rice / Maize Grits / Samp		290 388	290 388		266 524	266 524		137 473	137 473
Sifted Maize Meal	28 005	43 582	71 587	37 556	33 355	70 911	19 598	13 464	33 062
Special Maize Meal	401 344	16 087	417 431	357 886	3 978	361 864	190 569	4 846	195 415
Super Maize Meal	2 275 099	38 777	2 313 876	2 388 000	31 789	2 419 789	1 283 276	15 217	1 298 493
Unsifted Maize Meal	12 290	1 202	13 492	10 376	2	10 378	4 193	2	4 195
Other maize products intended for Human consumption	90 475	60 437	150 912	113 303	56 325	169 628	55 636	47 025	102 661
Total	4 277 029	634 603	4 911 632	4 519 647	563 539	5 083 186	2 424 796	305 578	2 730 374

* Included total for yellow rice, grits and samp

SAGIS: Monthly Data – Products Manufactured, Imported & Exported



Wheat

WHEATEN PRODUCTS MANUFACTURED PER MARKETING YEAR

Date Published: 2018/12/07

	Marketing year: Oct 2016 - Sep 2017 Manufactured Tons Progressive: 12 Months	Marketing year: Oct 2017 - Sep 2018 Manufactured Tons Progressive: 12 Months (Oct - Sep)	Marketing year: Oct 2018 - Sep 2019 Manufactured Tons Progressive: 1 Month (Oct)
Cake Flour	859 666	886 561	85 863
Self-Raising Flour	17 845	17 169	1 749
White Bread Flour	1 086 256	1 137 463	97 464
Brown Bread Flour	427 996	408 574	33 710
Other Flour (Industrial)	143 889	121 959	10 270
Whole Wheat Meal	3 566	3 196	372
Bran	630 287	653 359	59 389
Semolina	18 782	18 675	877
Total	3 188 287	3 246 956	289 694

SAGIS: Monthly Data – Wheat Products



Panbaked bread

	Sep 2017 Manufactured Units	May 2018 Manufactured Units	Jun 2018 Manufactured Units	Jul 2018 Manufactured Units	Aug 2018 Manufactured Units	Sep 2018 Manufactured Units	Oct 2018 Manufactured Units
WHITE BREAD							
400g (Units)	192 345	140 742	140 685	137 825	137 943	140 769	140 406
600g (Units)	16 481 304	21 792 355	20 624 839	21 240 595	22 341 639	22 524 655	20 417 965
700g (Units)	70 471 074	70 266 726	70 248 909	71 571 639	75 875 167	76 678 239	72 921 558
Other (Units)	534 210	763 941	817 646	835 165	840 540	788 713	1 015 023
White Bread (Total Units)	87 678 933	92 963 764	91 832 079	93 785 224	99 195 289	100 132 376	94 494 952
BROWN BREAD							
400g (Units)	74 662	74 036	68 593	63 817	61 823	65 882	66 580
600g (Units)	19 094 345	26 479 373	25 468 782	26 440 244	27 327 493	27 884 716	26 707 173
700g (Units)	68 300 307	66 363 433	67 010 548	67 495 073	71 723 658	72 712 038	69 918 853
Other (Units)	1 415 666	1 492 186	1 437 123	1 498 619	1 529 709	1 445 028	1 540 669
Brown Bread (Total Units)	88 884 980	94 409 028	93 985 046	95 497 753	100 642 683	102 107 664	98 233 275
WHOLE WHEAT							
400g (Units)	1 184	1 297	1 229	1 216	1 375	1 239	1 289
600g (Units)	56 479	52 515	20 638	47 742	47 424	95 711	52 325
700g (Units)	542 917	473 710	519 375	491 042	538 332	597 968	523 724
Other (Units)	1 857 042	1 972 557	1 919 406	1 915 336	2 080 542	2 015 793	2 094 326
Whole Wheat (Total Units)	2 457 622	2 500 079	2 460 648	2 455 336	2 667 673	2 710 711	2 671 664
OTHER							
400g (Units)	4 699	6 250	4 859	5 863	6 813	6 124	6 702
600g (Units)	37 753	24 228	26 117	25 571	24 494	24 896	29 110
700g (Units)	34 182	12 081	12 300	11 664	10 986	9 580	11 138
Other (Units)	264 658	278 546	238 626	232 637	215 919	179 920	348 612
Other (Total Units)	341 292	321 105	281 902	275 735	258 212	220 520	395 562
Total	179 362 827	190 193 976	188 559 675	192 014 048	202 763 857	205 171 271	195 795 453

SAGIS: Monthly Data – Products Manufactured, Imported & Exported

Oilseeds

OILSEEDS PRODUCTS MANUFACTURED PER MARKETING YEAR

Date published: 2018/12/07

	Marketing year: Mar 2017 - Feb 2018 Manufactured Tons Progressive: 12 Months	Marketing year: Mar 2018 - Feb 2019 Manufactured Tons Progressive: 8 Months (Mar - Oct)
Palm Oil and Derivatives	0	0
Soybean Oil	152 434	112 562
Sunflower Oil	319 052	227 497
Cottonseed Oil	0	0
Coconut Oil/ Groundnut Oil/ Canola Oil/ Corn (Maize) Oil/ Blends or mixes of Oils which includes one of the above Oils/ Biodiesel	55 278	36 958
Cottonseed Oilcake	0	0
Sunflower Oilcake	369 122	268 530
Coconut Oilcake	0	0
Palmnut Oilcake	0	0
Soybean Oilcake/ Canola Oilcake	722 794	529 743
Soybean Flours and Meals/ Textured Vegetable Protein	35 121	26 246
Soybean Fullfat	155 345	143 780
Peanut Butter and Paste	30 422	20 502
Total	1 839 568	1 365 818

SAGIS: Weekly Data – Imports & Exports

(Maize & Wheat)



WHITE MAIZE: RSA EXPORTS - 2018/19 SEASON

	Week	BOTSWANA	LESOTHO	MOZAMBIQUE	NAMIBIA	SPAIN	SWAZILAND	Total/Totaal	Total/Totaal
1	28 Apr - 04 May/Mei 2018	2 492	1 408	1 448	1 989	16 080	210	23 627	23 627
2	05 May/Mei - 11 May/Mei 2018	4 681	668	1 562	2 939	1 496	281	11 627	35 254
3	12 May/Mei - 18 May/Mei 2018	4 367	308	2 373	618	0	137	7 803	43 057
4	19 May/Mei - 25 May/Mei 2018	4 424	3 133	914	380	0	1 232	10 083	53 140
5	26 May/Mei - 01 Jun 2018	2 546	936	1 232	0	0	1 388	6 102	59 242
6	02 Jun - 08 Jun 2018	3 885	441	1 308	0	0	869	6 503	65 745
7	09 Jun - 15 Jun 2018	3 888	8	678	0	0	1 123	5 697	71 442
8	16 Jun - 22 Jun 2018	4 680	726	928	0	0	918	7 252	78 694
9	23 Jun - 29 Jun 2018	4 467	2 774	1 127	0	0	674	9 042	87 736
10	30 Jun - 06 Jul 2018	3 575	563	1 112	0	0	776	6 026	93 762
11	07 Jul - 13 Jul 2018	4 208	229	602	0	0	277	5 316	99 078
12	14 Jul - 20 Jul 2018	3 064	633	1 349	0	0	102	5 148	104 226
13	21 Jul - 27 Jul 2018	3 365	2 177	1 148	0	0	1 521	8 211	112 437
14	28 Jul - 03 Aug 2018	2 953	134	807	0	0	0	3 894	116 331
15	04 Aug - 10 Aug 2018	4 182	0	1 316	0	0	0	5 498	121 829
16	11 Aug - 17 Aug 2018	3 864	0	1 388	0	0	0	5 252	127 081
17	18 Aug - 24 Aug 2018	5 623	440	1 112	0	0	0	7 175	134 256
18	25 Aug - 31 Aug 2018	3 903	0	167	0	0	0	4 070	138 326
19	01 Sep - 07 Sep 2018	3 871	12	740	0	0	0	4 623	142 949
20	08 Sep - 14 Sep 2018	3 806	0	1 024	0	0	0	4 830	147 779
	Total	77 844	14 590	22 335	5 926	17 576	9 508	147 779	

SAGIS: Weekly Data

– Intentions to Import & Export (Maize)



Intended RSA Maize Exports - Return Week Ending 2018/11/30

Intended Week Ending	WHITE			YELLOW			TOTAL		
	Previous Week Intentions Publication	Difference/ Adjustments	Current Week Intentions Publication	Previous Week Intentions Publication	Difference/ Adjustments	Current Week Intentions Publication	Previous Week Intentions Publication	Difference Adjustments	Current Week Intentions Publication
2018-11-16	9 270	-442	8 828	3 055	1 815	4 870	12 325	1 373	13 698
2018-11-23	8 714	1 419	10 133	3 156	1 768	4 924	11 870	3 187	15 057
2018-11-30	9 400	1 895	11 295	3 141	1 877	5 018	12 041	4 272	16 313
2018-12-07	8 782	-16	8 766	58 078	-137	57 941	66 860	-153	66 707
2018-12-14	10 877	-86	10 791	3 778	-137	3 641	14 655	-223	14 432
2018-12-21	10 470	211	10 681	3 778	-137	3 641	14 248	74	14 322
2018-12-28	7 250	993	8 243	3 450	193	3 643	10 700	1 186	11 886
2019-01-04	7 675	-450	7 225	2 900	75	2 975	10 575	-375	10 200
2019-01-11	7 375	-550	6 825	2 900	75	2 975	10 275	-475	9 800
2019-01-18	7 075	-250	6 825	2 800	175	2 975	9 875	-75	9 800
2019-01-25	0	0	6 825	0	0	2 975	0	0	9 800

PLEASE NOTE: The "Current Week Intentions Publication" figure (marked in bold and yellow) for the weeks ending 2018/11/30, 2018-11-23 and 2018-11-16 is the actual exports that took place

Difference: The difference between the intended exports and actual exports

SAGIS: Weekly bulletin

SAGIS WEEKLY BULLETIN / SAGIS WEEKLIKSE BULLETIN

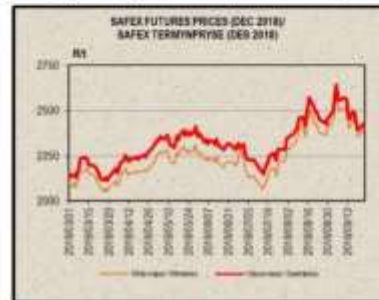
Please note that as from Thursday 23 Aug 2018, numbers 1, 2 & 3 in this bulletin will be hypertexted with the relevant pages on our website / Neem asseblief kennis dat vanaf Donderdag 23 Aug 2018, sal nommers 1, 2 & 3 in hierdie bulletin geënkodet wees met die relevante bladsye op ons webwerf.

1. PRODUCER DELIVERIES:	1. PRODUSENTELEWERINGS:
http://www.sagis.org.za/weekly_prod_deliveries.html	
2. IMPORTS, EXPORTS & MAIZE INTENTIONS:	2. INVOERE, UITVOERE & WIELIE INTENSIES:
http://www.sagis.org.za/weekly_imp-exp.html	

3. DOMESTIC PRICES PER SAFEX (R/t)(a)

3. PLAASLIKE PRYSE VOLGENS SAFEX (R/t)(a)

Commodity	Future Prices / Termynpryse (2018/09/25) R/t(a)					Kommoditeit
	Oct-18	Dec-18	Mar-19	May-19	Jul-19	
White maize	2344.00	2401.00	2451.00	2472.00	2506.00	Witmielies
Yellow maize	2377.00	2434.00	2477.00	2460.00	2483.00	Geelmielies
Wheat	4340.00	4453.00	4580.00	4642.00	4662.00	Koring
Sunflower	5090.00	5150.00	5103.00	4990.00	5082.00	Sonneblom
Soybeans	4512.00	4631.00	4754.00	4814.00	4872.00	Sojabone
Sorghum	3650.00	3600.00	3550.00	3550.00	3568.00	Sorghum



Directors/Direktore:

Alternate Directors/Alternatiewe Direktore:
General Manager/Algemeenbestuurder:

Robert J. DE JONCKHEERE, Mabel TH. (MANYA) MAMANE (MANYA), Nels MALAN (MANYA), Stephen Z. (MANYA) POTHAKA & CO (POT)
Gerrit van der Merwe, Barry van der Merwe, Schalk van der Merwe, Pieter de Waard, JH. (MANYA)
Doreen H. (MANYA)

Historical data

- Production deliveries, Consumption, Imports & Exports
- Historic summary – Hectares & Production
- Product Information
- Price information
- Parity prices
- Population information

SAGIS: Historic info on Ha & Production



Production year	Maize			Total RSA Production			Maize			Commercial Agriculture			Non-Commercial Agriculture			Wheat			Groundnuts			Sunflowerseed			Sorghum		
	Hectare	Ton	Ton/h	Hectare	Ton	Ton/h	Hectare	Ton	Ton/h	Hectare	Ton	Ton/h	Hectare	Ton	Ton/h	Hectare	Ton	Ton/h	Hectare	Ton	Ton/h	Hectare	Ton	Ton/h	Hectare	Ton	Ton/h
1988/89	4 327 368	12 445 000	2.88	3 805 000	11 552 000	3.04	522 368	893 000	1.71	2 009 000	3 620 000	1.80	178 000	126 000	0.71	436 000	444 000	1.02	228 000	511 000	2.24						
1989/90	3 983 908	9 134 000	2.29	3 503 000	8 341 000	2.38	480 908	793 000	1.65	1 843 000	2 010 000	1.09	106 000	87 000	0.82	555 000	649 000	1.17	196 000	341 000	1.74						
1990/91	3 647 272	8 573 000	2.35	3 207 000	7 825 000	2.44	440 272	748 000	1.70	1 563 000	1 709 000	1.09	104 000	88 000	0.85	621 000	621 000	1.00	166 000	302 000	1.82						
1991/92	3 965 711	9 244 000	0.82	3 487 000	2 956 000	0.85	478 711	288 000	0.60	1 436 000	2 142 000	1.49	245 000	89 000	0.36	474 000	183 000	0.39	191 000	118 000	0.62						
1992/93	4 164 736	9 963 000	2.39	3 662 000	9 077 000	2.48	502 736	886 000	1.76	750 000	1 324 000	1.77	198 000	101 000	0.51	535 000	350 000	0.65	239 000	515 000	2.15						
1993/94	4 442 233	13 245 000	2.98	3 906 000	12 067 000	3.09	536 233	1 178 000	2.20	1 075 000	1 984 000	1.85	135 000	117 000	0.87	411 000	366 000	0.89	227 000	520 000	2.25						
1994/95	3 357 264	4 836 000	1.44	2 952 000	4 406 000	1.49	405 264	430 000	1.06	1 048 000	1 840 000	1.76	123 000	79 000	0.64	576 000	539 000	0.94	180 000	291 000	1.62						
1995/96	3 761 000	10 138 000	2.70	3 307 000	9 694 000	2.93	454 000	444 000	0.98	1 363 000	1 977 000	1.45	135 000	145 000	1.07	608 000	784 000	1.29	174 000	536 000	3.08						
1996/97	4 023 065	10 106 008	2.51	3 361 000	9 582 000	2.85	662 065	524 008	0.79	1 294 000	2 712 000	2.10	95 000	117 000	1.23	464 000	468 000	1.01	161 000	361 000	2.24						
1997/98	3 559 750	7 664 690	2.15	2 956 000	7 203 000	2.44	603 750	461 690	0.76	1 382 000	2 805 000	2.03	59 100	65 160	1.10	511 000	562 067	1.10	131 277	264 600	2.02						
1998/99	3 566 683	7 915 615	2.22	2 904 000	7 461 000	2.57	662 683	454 615	0.69	745 000	1 687 500	2.27	94 550	98 250	1.04	828 000	1 109 000	1.34	98 900	155 950	1.58						
1999/2000	4 012 843	11 422 661	2.85	3 429 440	11 000 800	3.21	583 403	421 861	0.72	718 000	1 770 000	2.47	82 600	113 550	1.37	396 350	530 625	1.34	142 200	352 450	2.48						
2000/01	3 189 215	7 744 964	2.43	2 673 905	7 486 840	2.80	515 310	258 124	0.50	934 000	2 348 550	2.51	165 250	183 840	1.11	521 695	638 320	1.22	88 300	175 580	1.95						
2001/02	3 533 459	10 048 964	2.84	3 016 880	9 731 830	3.23	516 579	317 134	0.61	973 500	2 450 000	2.52	94 160	120 185	1.28	667 510	928 790	1.39	75 250	197 525	2.62						
2002/03	3 650 904	9 677 504	2.65	3 184 950	9 391 450	2.95	465 954	286 054	0.61	941 100	2 427 000	2.58	49 850	60 005	1.20	606 450	642 610	1.06	95 497	219 539	2.30						
2003/04	3 204 110	9 710 070	3.03	2 843 300	9 482 000	3.33	360 810	228 070	0.63	748 000	1 540 000	2.06	71 500	115 000	1.61	530 000	648 000	1.22	130 000	373 000	2.87						
2004/05	3 223 440	11 715 948	3.63	2 810 000	11 450 000	4.07	413 440	265 948	0.64	830 000	1 680 000	2.02	40 000	64 000	1.60	460 000	620 000	1.35	86 500	260 000	3.01						
2005/06	2 032 446	6 935 056	3.41	1 600 200	6 618 000	4.14	432 246	317 056	0.73	805 000	1 905 000	2.37	48 550	74 000	1.52	472 480	520 000	1.10	37 150	96 000	2.58						
2006/07	2 897 066	7 338 738	2.53	2 551 800	7 125 000	2.79	345 266	213 738	0.62	764 800	2 105 000	2.75	40 770	58 000	1.42	316 350	300 000	0.95	69 000	176 000	2.55						
2007/08	3 296 980	13 164 069	3.99	2 799 000	12 700 000	4.54	497 980	464 069	0.93	632 000	1 905 000	3.01	54 200	88 800	1.64	564 300	872 000	1.55	86 800	255 000	2.94						
2008/09	2 896 683	12 566 633	4.34	2 428 000	12 050 000	4.96	468 683	516 633	1.10	748 000	2 130 000	2.85	54 550	99 500	1.82	635 800	801 000	1.26	85 500	276 500	3.23						
2009/10	3 263 340	13 420 864	4.11	2 742 400	12 815 000	4.67	520 940	605 864	1.16	642 500	1 958 000	3.05	57 450	88 000	1.53	397 700	490 000	1.23	86 675	196 500	2.27						
2010/11	2 858 760	10 924 335	3.82	2 372 000	10 360 000	4.37	486 760	564 335	1.16	558 100	1 430 000	2.56	55 150	64 250	1.17	642 700	860 000	1.34	69 200	155 000	2.24						
2011/12	3 141 114	12 759 119	4.06	2 699 000	12 120 656	4.49	442 114	638 463	1.44	604 700	1 905 280	3.15	45 450	65 690	1.45	453 300	527 110	1.16	48 550	141 050	2.91						
2012/13	3 238 100	12 485 689	3.86	2 781 200	11 690 000	4.20	456 900	675 089	1.48	515 200	1 870 000	3.63	46 900	41 500	0.88	504 700	557 000	1.10	62 620	147 200	2.35						
2013/14	3 096 000	14 982 050	4.84	2 688 200	14 250 000	5.30	408 000	675 000	1.65	505 500	1 870 000	3.70	52 125	74 500	1.43	598 950	832 000	1.39	78 850	265 000	3.36						
2014/15	3 048 050	10 628 800	3.49	2 652 850	9 955 000	3.75	395 200	673 800	1.70	476 570	1 750 000	3.67	58 000	62 300	1.07	576 000	663 000	1.15	70 500	120 500	1.71						
2015/16	2 212 880	8 214 240	3.71	1 946 750	7 778 500	4.00	266 130	435 740	1.64	482 150	1 440 000	2.99	22 600	17 680	0.78	718 500	755 000	1.05	48 500	70 500	1.45						
2016/17	2 995 250	17 551 000	5.86	2 628 600	16 820 000	6.40	366 650	731 000	1.99	508 365	1 909 540	3.76	56 000	92 050	1.64	635 750	874 000	1.37	42 350	152 000	3.55						
2017/18	2 633 685	13 801 285	5.24	2 318 850	13 207 310	5.70	314 835	593 975	1.89	491 600	1 535 000	3.12	56 300	52 000	0.92	601 500	858 605	1.43	28 800	105 120	3.65						
2018/19										508 350	1 808 050	3.56															

SAGIS: Historic Price Information



Producer prices

Marketing year	Maize		Wheat	Sorghum	Sunflower	Soybean	Oats	Canola	Barley	Groundnuts
	R/c per ton		R/c per ton	R/c per ton	R/c per ton	R/c per ton	R/c per ton	R/c per ton	R/c per ton	R/c per ton
1989/90	268.00	263.00	458.25	205.47	683.91	589.87	154.25		350.00	
1990/91	302.67	302.67	521.43	231.83	739.29	614.34	152.98		457.39	
1991/92	357.62	357.62	653.32	295.00	736.40	723.28	223.67		520.18	
1992/93	452.81	452.81	748.24	475.00	835.10	863.00	264.34		586.12	
1993/94	417.00	417.00	801.48	466.37	845.00	843.00	306.10		671.29	
1994/95	387.02	387.02	770.50	357.00	898.00	859.00	323.16		671.79	
1995/96	598.62	598.62	846.78	482.00	980.00	930.00	307.26		720.11	
1996/97	593.14	638.17	966.02	475.00	870.00	1 200.00	341.95		790.87	
1997/98	580.00	600.00	817.75	520.00	1 003.74	1 391.46	328.05		800.00	
1998/99	593.00	539.40	808.19	550.00	1 364.17	1 095.51	425.00		750.00	2 200.00
1999/00	671.25	677.58	960.60	730.00	1 257.80	1 202.65	552.00		758.24	1 001.49
2000/01	535.10	560.05	1 165.35	520.00	915.70	1 285.54	727.33	1 208.00	800.00	1 976.48
2001/02	937.61	810.27	1 421.61	760.00	1 292.78	1 242.54	847.00	1 638.00	1 000.00	1 538.13
2002/03	1361.32	1370.50	1 572.05	1 500.00	2 238.04	2 010.95	950.00	2 385.00	1 200.00	2 460.45
2003/04	947.69	912.95	1 428.14	1 450.00	1 977.72	2 487.16	1 100.00	1 754.50	1 433.00	2 045.35
2004/05	822.28	875.06	1 091.43	900.00	1 826.88	2 134.74	1 050.00	1 745.38	1 342.30	2 425.86
2005/06	659.66	586.68	1 033.99	450.00	1 579.78	1 274.47	925.09	1 686.54	1 142.80	5 049.89
2006/07	996.40	960.33	1 524.19	1 191.41	1 866.65	1 467.44	979.38	2 660.00	1 576.42	2 870.15
2007/08	1513.18	1484.87	2 505.58	1 483.43	2 547.48	2 343.31	1 635.66	2 700.00	1 381.40	2 464.21
2008/09	1606.66	1580.93	2 307.46	1 774.43	4 271.88	4 026.26	2 055.41	3 100.00	2 300.31	2 849.11
2009/10	1440.96	1301.75	1 607.67	1 494.65	2 854.58	3 187.39	1 297.47	2 800.00	2 125.90	5 514.38
2010/11	1097.91	1131.50	2 303.68	1 383.50	2 953.46	2 527.96	2 170.08	3 182.04	2 006.34	6 122.10
2011/12	1691.66	1636.14	2 369.08	1 671.61	3 735.57	3 176.39	2 003.71	4 600.00	2 277.23	6 360.69
2012/13	2200.12	2162.51	2 914.55	2 675.01	4 396.90	3 684.46	2 051.58	4 760.00	2 498.99	4 659.65
2013/14	2026.56	2123.98	2 880.31	2 691.62	4 844.00	4 691.65	2 270.50	4 650.79	2 519.07	5 200.52
2014/15	2122.15	2160.32	3 052.85	2 626.78	4 435.47	5 549.81	2 945.49	4 750.00	2 644.29	8 287.26
2015/16	2502.41	2255.20	3 772.44	2 380.90	4 552.42	4 731.87	4 153.08	5 950.00	3 098.03	8 755.87
2016/17	4025.09	3140.50	3 704.64	3 434.39	6 064.02	6 197.36	2 738.69	5 707.04	3 352.15	8 233.51
2017/18	1902.98	1982.23	3 738.81	2 638.36	4 370.64	4 884.50	N/A	5 300.00	2 823.56	7 581.89

Source: Abstract of Agricultural Statistics

Rton

Maize

Wheat

Sorg Oats Barl



Please visit SAGIS' web for much more information

www.sagis.org.za

Thank you

SAGIS



Year	Area	Inter:
2010	2 428.7	Sep
2011	3 016	Not available
2012	0.0	Not available
2013	6 874.0 (b)	Not available
2014	565.0	
2015	1 678.8 (b)	

